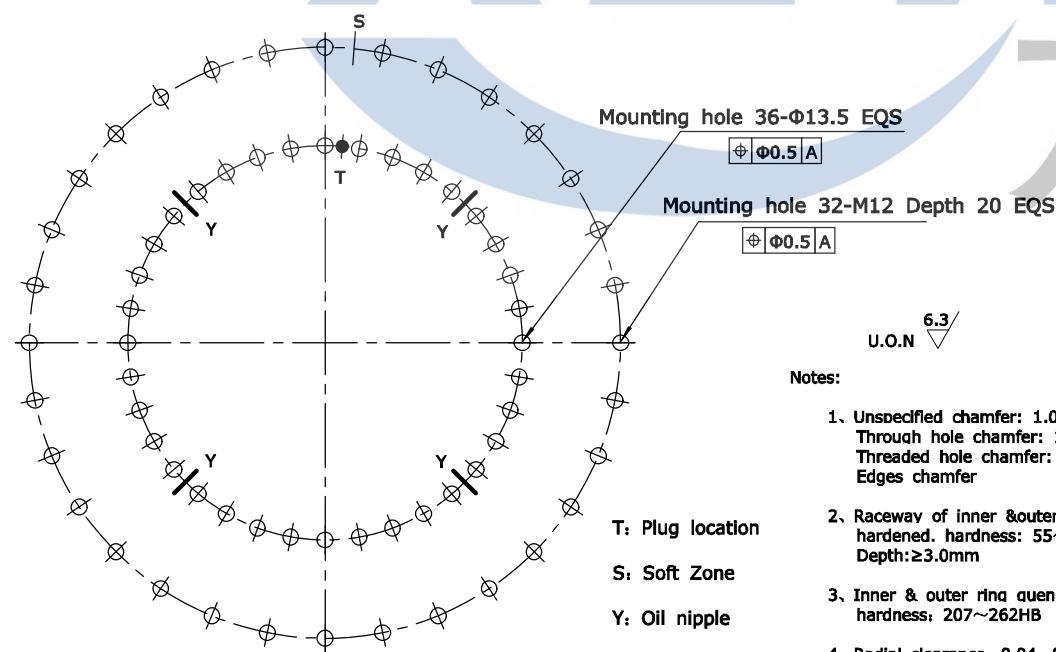
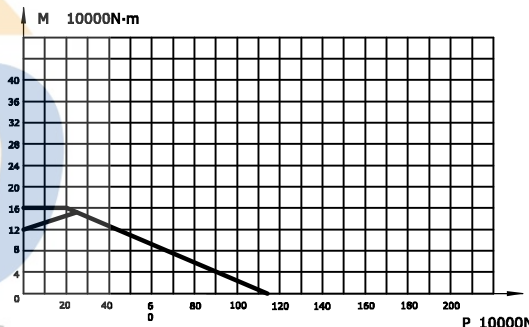
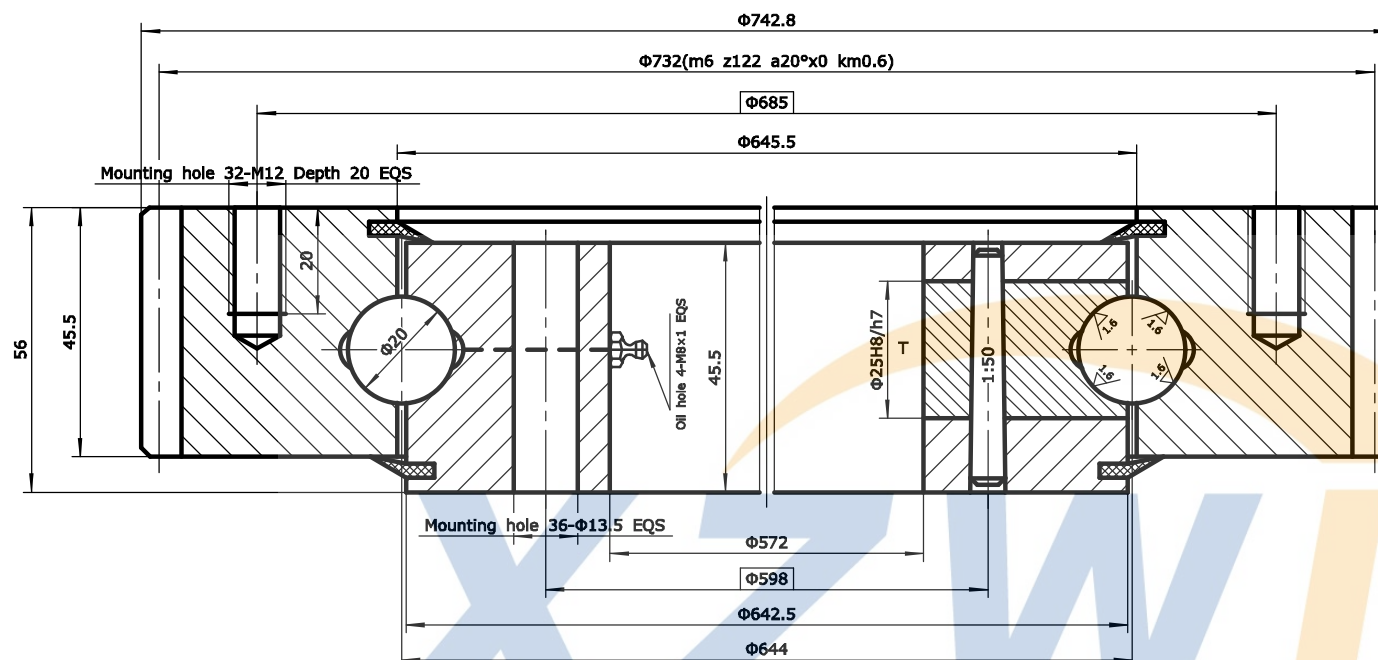



|   |          |                          |
|---|----------|--------------------------|
| Module                                    | m        | 6                        |
| Teeth no.                                 | z        | 122                      |
| Teeth pressure angle                      | $\alpha$ | 20°                      |
| Modification coefficients                 | x        | 0                        |
| Reduction coefficients                    | km       | 0.6                      |
| Precision(GB10095-88)                     |          | 10                       |
| Average base tangent length and deviation | W        | 249.38<br>-0.35<br>-0.60 |
| Spanned tooth count.                      | k        | 14                       |
| Base tangent length change tolerances     | FW       | 0.13                     |



- Notes:
1. Unspecified chamfer: 1.0×45°  
Through hole chamfer: 1.0×45°  
Threaded hole chamfer: 2.0×45°  
Edges chamfer
  2. Raceway of inner & outer ring induction hardened. hardness: 55~62HRC  
Depth: ≥3.0mm
  3. Inner & outer ring quenched & tempered, hardness: 207~262HB
  4. Radial clearance: 0.04~0.25 mm  
Axial clearance: 0.04~0.25 mm

T: Plug location  
S: Soft Zone  
Y: Oil nipple

| No.      | Standard   | Component   | Material     | Model  | Qty          | Remark |
|----------|------------|---|--------------|--------|--------------|--------|
| 08       | HG/T2811   | Seals   | NBRI-3       | W17    | 2            |        |
| 07       | GB117-76   | Pin   | CN45         | Φ8×40  | 1            |        |
| 06       |            | Plug  | CN45         | Φ25    | 1            |        |
| 05       | JB/T7940.7 | Oil nipple  | Component    | M8×1   | 4            |        |
| 04       | GB/T699    | Inner ring  | 50Mn         |        | 1            |        |
| 03       | GB/T308    | Ball  | GCr15        | 19.844 | 83±1         |        |
| 02       | HG/T2349   | Spacer  | Nylon        | D20    | 83±1         |        |
| 01       | GB/T699    | Outer ring  | 50Mn         |        | 1            |        |
| Model    |            | WD-061.20.0644  | Drawing      |        | Weight       | 52kg   |
| Name     |            | Slewing Bearing   | Qty          |        | Scale        |        |
| Material |            | 50Mn  | Total 1 page |        | the 1st page |        |
| Design   | Standard   | <br>XUZHOU WANDA SLEWING BEARING CO.,LTD<br>Tel: +86 516 83309366 Fax: +86 516 83915766<br>http://www.slew-bearing.com |              |        |              |        |
| Check    |            |   |              |        |              |        |
| Process  | Approve    |   |              |        |              |        |
| Date     |            |   |              |        |              |        |